

From the Editor...

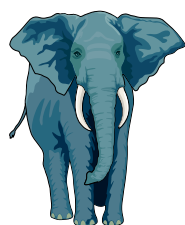
Another winter has (almost) passed and it is time for the "pothole" season. This is when your vehicle's tires discover the new potholes to China. This season lasts until the DOT (dept of transportation) comes along and either lumps over the hole making a bump or shallow fills it creating a new dip. Either way, the road is never the same again.

The same can be said of your life and changes that come along. Your personal road is never the same again.

I recently accepted a new show title in the club. Apparently potholes are in the job description. Funny how the challenging aspects of this job are not actually *printed* in the job description. This is the year of the pothole. Next year there will be just a few. In two years the tires will hum with happiness because a new layer of asphalt will be laid. I can see that smooth, dark gray road of the future now.

Remember – when potholes shake your vehicle, picture that smooth blacktop just over the next hill.

The sign up sheets for various areas at the show will be available - silent auction, hospitality booth, hospitality food, and geode. If you cannot attend the meeting, please call Prep Maynard; show chairperson to sign up for the hours in the area that you want.



Reminder

Since there is no volunteer, the President will bring refreshments

Door Prize Winner Shirley O'Connor

Quartz with Chlorite

Chlorite – One of the most favorable healing minerals. It is a purifier and is quite useful for cleansing the aura. It attacks anger, hostility, and exasperation and dissipates negative energy.

Rutilated Quartz – Rutile crystallizes in quartz in the form of prismatic or needle-like crystals. It has represented the lovely hair of Venus and the sweet tipped arrows of love. The ethereal aspects of rutile bring strength with love, ease in transition, growth in all avenues of one's development and calm, reason and order. It repels negative energy. It is a mineral for stabilizing relationships, marriages, mental processes and emotional and physical imbalances.

From Ye Ole President

Hi Gold Prospectors,

I have 8 plus acres of shallow lakebeds with excellent gold. The depth of over burden to bedrock is 18" to 48". I am looking for some one with an 8' gold dredge to dredge the gold and split 25% back to the house. I figure it would keep someone busy for two seasons. If you know some one please forward my email address to them, happy gold prospecting.

Don Davidson
dd12@wnclink.com



FEBRUARY MINUTES

The President called meeting to order.

Robin Suddaby introduced the visitors and new members.

Minutes from the Jan meeting were read. Tom Bapple made motion to accept, Walt Olds seconded motion, voted and passed.

Prep reported on the faceting machines. He will check into when the old machines will be removed from Craft Center. Robin explained some of the details of the five machines and other equipment donated to the Craft Center. Our club owns three machines that will be available to members. Details will need to be decided as to how this will be handled.

Jean made a motion that the scholarship for the show workers be to William Holland or Wildacres, winners choice. Corinne Hummel seconded, vote passed.

Show Reports

Tom let us know that the silent auction room had been made smaller so much of the items would need to be stored upstairs. There would be a need for someone to help bring some of the items down from time to time.

Jerry plans to have Friday's dinner @ 9 PM, there was some discussion. Final decision was put off until March meeting.

Prep Maynard asked that each participant make a sign for their display.

Jean Emerson will chair the hospitality booth and Marion will co-chair. Grab bags, magazines, and information about the club will be here.

Jean made a motion that those who demonstrate do not have to pay the 10% fee at the demo booth. Corinne seconded, vote passed. Jerry Miller amended the motion- if a person works at least 6 hours at the show, you don't have to pay the 10% fee. Vitas Carroll seconded, vote passed, Jerry made a second amendment- items must be collected or made by the seller. Tom seconded, vote passed.



It was decided to extend an invitation to Reed Gold Mine to display at the show.

Submitted by
Marion Broadway- Acting Secretary



The Prez Sez

Preparations are going smoothly, so I am looking forward to enjoying a great show. It is good to see members working together to achieve something significant.

I want to become qualified to use the cabochon equipment, so I will be taking the cabochon class that starts Monday, March 18th. With this qualification, I plan to arrange time on weekends for some informal demos and workshops. More about this later.

Anyone want to join me for the class? Check with the Arts Center to see if there are vacancies.

MARCH FIELD TRIP

Joint trip with the Greensboro Club

WHERE – Martin Marietta Woodleaf Quarry, Woodleaf, NC

WHEN – March 16th 8 AM until 1 PM

MINERALS – prehnite, laumontite, apophyllite, chabazite, stilbite, calcite, fluorite (massive), epidote, pyrite, and quartz has been found in the past.

DETAILS – **HARD HATS AND BOOTS ARE REQUIRED**

Bring- tools, water, snacks, containers for specimens, wrapping material, sun protection, etc.

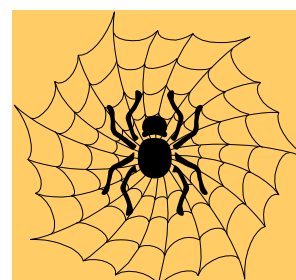
DIRECTIONS – Take Hwy 64 West, go thru Asheboro, go past Lexington, about 10 miles past Lexington take Hwy 801 South to the town of Woodleaf, once in Woodleaf you will pass a trailer park and pass Cool Springs Road, the next road is about 30 YARDS away and make a Right turn on this road (convenience store as landmark), go about 700 yards, entrance to quarry will be on your right.



WEBSITE OF THE MONTH

dakotamatrix.com

Excellent photography and display of minerals. Entire specimen is one photograph and another photo shows a close up of the item. You will see what the crystal structure of a mineral can look like. Plenty of rare/unusual specimens. Pricy like most Internet sites. There is an under \$50 section.



Complete list of Refreshment Volunteers

April – Potluck dinner

May – Lois Norman

June – OPEN

July – Marion & Mickey Broadway

August – Ice Cream Social

September – C & C Hummel

October – Charlie Bender

November – Debbie & Jerry Miller