

Tar Heel Tailings

A newsletter for Gem and Mineral enthusiasts in and around the Raleigh, North Carolina area.

Special Interest Articles:

- Prez Sez
- Door Prizes
- NC Gold

Individual Highlights:

Prez Sez	1
February Door Prize Peacock Marble Vase	1
Treasurer's Report	2
April's Business Meeting Minutes	3
April Door Prize	4
Field Trip Information	4
NC Gold	6
Announcements	7
Vug Sites:	7

Prez Sez By Jack Fried

Dear Members,

As you all may not have heard, our president Dan Cathey has had to abruptly resign. Our bylaws have a stipulation regarding this and at our next meeting, May 16, 2017, we will be having a special election for the nomination and vote to elect a new President. Please nominate all that are interested in the position. The new President will take office immediately,



Continued on Page 4

February Door Prize – Peacock Marble Vase By Danielle Cozart

In Geology, the term marble refers to metamorphosed limestone, and is formed when the calcite present in the limestone recrystallizes to form a rock that is a mass of interlocking calcite crystals. There is a huge variety of marble and it can be found on almost every continent in large deposits that can be hundreds of feet thick. Peacock marble is found in Southwest China and was created during the formation of the Himalayas 40-50 million years ago.

Marble is typically light in color and characterized by veins and swirls made of impurities such as clay, iron oxides, sand, and chert. Peacock marble

can contain up to ten colors depending on the mineral impurities it contains. The Peacock marble vase pictured is white, green, gray, and black, meaning it's made from calcite, serpentine, silicon dioxide, and carbon, iron or manganese. Some other colors and their

corresponding minerals include purple – manganese; brown – iron; red – hematite; orange – iron; violet – iron, manganese; yellow – limonite; and blue – copper, cobalt, chromium.

Continued on Page 4



Tar Heel Gem & Mineral Club, Inc.

10609 Chelsea Drive
Raleigh NC 27603

Jack Fried – President
jackfried@aol.com
(919) 239-0142

Open – V-President

Corinne Hummel – Treasurer
mchummel@mindspring.com
(919) 779-6220

Linda Searcy – Secretary
LJS0928@gmail.com
(919) 909-0750

Bob Bendelow – Librarian &
Committee Member
r.bendelow@earthlink.net
(919) 552-8175

Melissa Whitfield – Committee
Member
sanfordsgal@gmail.com
(919) 395-3441

George Harris – Newsletter Editor
GeorgeFHarris@yahoo.com
(919) 674-0243

Shirley Green – Field-Trip Coord.
richard60green@yahoo.com
(919) 848-1085

We're on the Web!

See us at:

www.tarheelclub.org

Program & Refreshments

REFRESHMENT SCHEDULE:

Coordinator: Loretta Turcotte
rosevilla@nc.rr.com
(919) 263-8523

May TBD

PROGRAM SCHEDULE:

May	Linda Searcy: Faceting Stones – My Experiences
June	Rachel Smith – NC Museum of Natural Sciences: Meteorites and Search for Life in the Solar System
July	Cathy Young – Mid-Atlantic Nature and Fossil Adventures: Fossil Collecting in the Mid-Atlantic
August	Ice Cream Social
September	Fletcher McDonald-Micro-mineral Collecting and Preparation
October	Nominations, Grab Bags
November	Elections

Remember, the club will reimburse you for up to \$85 (bring your receipts to the treasurer).

May Treasurer's Report

May Treasurer's Report

Feb. Ending /	
Mar. Beginning Balance	\$13,076.68

Deposits (+)	
Members	\$265.00

Sub total	\$265.00

Checks Written (-)	
Advertising*	\$245.00
Show Printing*	220.71
Geodes*	3,329.18
New coolers for Upstairs*	169.70
New paper bags (grab)*	64.37
Meeting supplies (plates)	31.89
Meeting Food	85.00
Show supplies, etc.*	1,207.14
Set Up Money for Show*	540.00

Sub Total	\$5,892.99

Mar. Ending /	
Apr. Beginning Balance	\$7,448.69
*Show Items	

Continued on Page 5.

May B-Day Members

- Peter Barra
- Mickey Broadway
- Ben Cathey
- Mark Cox
- Jim Davenport
- Shirley Green
- Vincent Hagerty
- John Heinz
- Mark Hipps
- Corinne Hummel
- Alexis Todaro
- Kim Whitfield



Membership applications may be mailed to:

Tar Heel Gem & Mineral Club, Inc.

Attention: Treasurer
10609 Chelsea Drive
Raleigh, NC 27603

Tar Heel Gem and Mineral Club, Inc. - April Meeting Minutes

Tuesday, April 18, 2017

Attendees = ??

Opening of Club Meeting:

Jack Fried, Acting President, opened meeting at 7:36pm.

New Business:

Next month is special election for President. Email to be sent to members of potential candidates. It is a big challenge to get volunteers for officer positions, not many active members (about 30) who participate, attend meetings, or volunteer for shows.

Bob Bendelow – effective May 1, new rules for members on use of the lapidary studio. Members will need club nametag and sign in for equipment use, etc.

Old Business:

Gem Show:

Cyndy Hummel, outgoing Show Chair

Jack Fried – Silent auction, no issues, need more identification help and pricing of stones, should there be any cleaning out of old stock? Request for volunteers to id and separate which may take at least a week. Need to decide on a Saturday to meet at trailer, who can id material? Suggested an onsite work day, perhaps in the spring or fall. Reminder to collect crowd control poles.

Linda Searcy - Hospitality – sales numbers given, suggestions for changes and improvements offered and will be noted. Request for cash boxes with multi-denomination slot tray for easier change making.

Food/refreshments at show – Gerald / wife / Loretta, may need other volunteers for future shows, need members / vendors to wear ID badges

Michael – 350 students came for his display information – print out of id of stones cost 40cents/each – should they be made available for handouts? Dozen families new to state picked up handouts, including information about ticks.

Grab bags – need to vote on cost of bags.

Geodes – Greg – 4 cameras, tv from Walmart was well-received by visitors – all 4 saws running, need more volunteers for geode setup, to make it easier for setup, suggest re-organization of trailer where geode items could be unloaded early and have paper/scissors/tape ready for table covering. Recommend a list on how to load/unload trailer. Questions and concerns were expressed for fluorescence safety issues, eyes / glasses/UV? Should the geode inventory be reevaluated? Suggestion made to entice volunteers with food / pizza. Can we rent or build fluorescent box? Live stream videos?

Next year's show dates are April 6,7,8 2018 -- suggestion made for video to promote foot traffic?

-- Security concerns – some vendors concerns with doors not locked at night.

-- Marketing efforts - more advertising needed, parking was full due to many concurrent events. Suggestion to have hand out flyers in parking lot. George Harris/Melissa to check on creation and use

of barcodes for scanner - for map of where bldg is located at fairgrounds, invite teachers / science w/kids but Friday start is after school is out...

-- Name tags for food / vendor and dealer badges need to be worn.

Gary McCutcheon, chair for show dealers - some retailers concerned about competition with wholesaler, some comments from vendors on not returning due to low sales, wholesalers, etc. Suggestion: Free Admission on show signs.

Flint knapping demo – should there be safety glasses for kids?

Refreshments:

All enjoyed the potluck – lots of goodies brought by members.

Loretta Turcotte brought beverages, paper stuff.



Door Prize:

Alfredo Strange chose Mookaite from Australia.

Close of Meeting:

Meeting closed at 9:35 pm

Respectfully Submitted

Linda Searcy

Secretary

Tar Heel Gem and Mineral Club, Inc.

Prez Sez

Continued from Page 1

and stay in office until our regular elections in November. Therefore please come and vote.

On the other side, I believe we have a great program this meeting. I would also like to thank Loretta Turcotte for doing a wonderful job with the refreshments.

Well, that is all I have for this month. The new President elect will speak to you next month.

Most Sincerely,
Jack Fried
Acting President,
Tar Heel Gem and Mineral Club, Inc.

April Door Prize - Mookaite

By Alfredo Strange

First, Thanks to Cindy for giving me the ticket so that I could win. Next, the reason I picked the Mookaite because the way its a solid color and be because it changes from white to to purple by having their colors white, orange, yellow, red and purple. It's a big chunk I'm going to probably going to polish and cut the piece then slab it or just leave it polished.

Field Trip Information

By Shirley Green

Hanson Rocky Mt. Quarry, Rocky Mount, NC

When:

Saturday, May 13, 2017 from 8:30 am to 12 noon.

EVERYONE NEEDS TO ARRIVE BY 8:15 AM.

LATE COMERS WILL BE ASKED TO LEAVE!!!! (NO EXCEPTIONS)

Where:

The address is 10471 North Carolina 97 West, Rocky Mount, NC 27801

Requirements:

- TAR HEEL CLUB BADGE
- HARD HAT
- STEEL TOE BOOTS
- SAFETY VEST
- SAFETY GLASSES
- Everyone must comply with any and all safety requirements or directions as set forth by the owner and staff.
- We are guests of this site so please do not leave any litter behind.

Tools:

- Pickaxes
- Shovels
- Rock hammer
- 3 pound hammer or sledgehammer
- Chisel or pry bar
- Long screwdriver
- Gloves
- Sunscreen
- Bug spray - not sure if we will need or not
- Backpack or bucket or both
- Newspaper to wrap your specimens in
- Plenty of fluids to drink
- Snacks
- Hand truck

Collecting:

Hopefully we will be finding fossils here!

Information:

Children are allowed with parental supervision.

Who:

Please RSVP to Shirley Green. richard60green@yahoo.com
(919) 848-1085

February Door Prize –Peacock Marble Vase

Continued from page 1

Most marble is made into either crushed stone to be is used as an aggregate in highways, railroad beds, building foundations, and other types of construction or dimension stone used in monuments, buildings, sculptures, paving and other projects. Crushed marble can also be used to neutralize acid, thanks to its calcium carbonate. Due to its low hardness (3 on the Mohs scale), marble is easy to carve.

To make a vase, the marble is turned on a lathe which carves the outside shape followed by the inside. The vase is then polished with a series of wet sandpapers until it reaches a fine polish.

Sources: geology.com, www.broadrivergems.com/peacock-marble.htm, granitemountainng.com/peacock.html

May Treasurer's Report

Continued from page 2

Mar. Ending /

Apr. Beginning Balance \$7,448.69

Deposits (+)

Dealers*	\$8,511.50
Members	455.00
Square "D"*	4,127.24
Geodes*	3,355.75
Silent Auction*	1,086.00
Hospitality*	1,575.20
Show*	30.00

Sub total \$19,140.69

Checks Written (-)

NC State Fair - Space*	\$10,849.00
Panera Food*	331.61
Geode expense*	63.76
Bags Staples*	37.11
Trailer Transport*	60.00
Upstairs food*	533.29
Postage - mailing prizes*	89.80
Newsletter	106.71

Sub Total \$12,071.28

Apr. Ending /

May. Beginning Balance \$14,518.10

*Show Items

North Carolina Gold

By Brian Burdette (First appearing in THE VIRGINIA PEN)

Intro: Panning for gold, like gambling, can become an addiction. When you see that first gleam of gold in your pan something happens to you. It's called catching the "gold bug." I had never panned for gold until moving to North Carolina in 2016, and now panning for gold has become almost a weekly activity. Of course, the mild winter weather has also played a major role in the frequency that I get to go panning.



Where To Go:

Someone once said "gold is where you find it" or something like that. Of course the same thing could be said about a lot of things. As it turns out, finding gold in the piedmont region of North Carolina is as easy as falling off a log. Having access to collecting and prospecting areas is a little more difficult.

However, there is a simple solution thanks to the foresight and cooperation of the U.S. Government. The location I prospect is not a secret nor is it on private property, but is located on public land in the Uwharrie National Forest in central North Carolina. Uwharrie National Forest is about an hour south of Greensboro or about an hour east of Charlotte, NC and is ground zero for the early American gold rush of the early 1800's. Open and accessible to prospecting the year round, Uwharrie National Forest offers many outdoor activities such as camping, kayaking, hiking, horseback riding, off-road vehicle trails, and more importantly, gold panning. The Uwharrie Mountains and surrounding areas are home to **lode mines** like the Reed Gold Mine and the Russell Gold Mine. Many unnamed smaller but very productive **placer gold mines** also operated in the area from the 1820's into the early 1900's. Gold is still common here, but even with the high price of gold today, commercial mining costs and environmental restrictions prohibit any

large scale recovery operations. Some small private claims and mining operations still exist in the area so be respectful of any private property that you may encounter. The following information about prospecting in the Uwharrie National Forest comes from their website at this link

<http://www.fs.usda.gov/detail/nfsnc/recreation/?cid=stelprdb5420144>):

- On the Uwharrie National Forest mineral materials can be removed using small hand tools along with hand-held sluice boxes, rocker panels and shovels. However, suction-dredging and the use of any motorized equipment to remove materials is prohibited.
- Gold pans may be used for gold panning in the beds of streams, but the banks of streams cannot be disturbed by digging or removing materials.
- Any disturbance to or removal of historical or archaeological artifacts is prohibited by federal law.

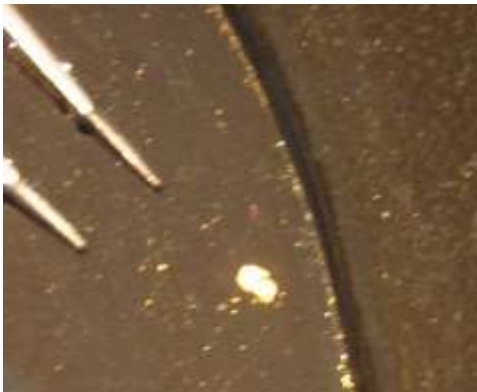
The best prospecting is in the creeks near El Dorado. The most accessible creeks for panning gold in this area are the Uwharrie River, Spencer Creek, McClean's Creek, Moccasin Creek, and the west Branch of Moccasin Creek. So far I have panned in parts of McClean's Creek, Moccasin Creek and the West Branch of Moccasin Creek finding gold nearly everywhere I tried. Just because I didn't find gold in a couple of spots doesn't mean that gold can't be found there, it just means I didn't find any in my test samples. There are many other creeks on the public land in the area but they are either harder to access or yield less gold, but who knows, you may hit a "gold mine" anywhere.

Finding a place to pan is as easy as finding a place where one of the forest service roads crosses a creek. The forest service roads are family car friendly and most of the roads are paved though some are unpaved but well maintained. Parking near the easiest creek accesses requires special care as the sides of the road may be muddy and uneven. Don't start your day by getting stuck. Get out and walk over the place you want to park. Go the extra 100 feet and walk a little farther to the creek. Most of the time you can park very close to a creek and pan for gold within sight of your vehicle. I have

found most of my gold in a spot where I can see my car. The most suitable place I have found is where forest service road 544 crosses Moccasin Creek about 1/2 mile west of Uwharrie Hunt Camp. This is a primitive campsite area with outhouses but no running water. This location is less than 2 miles from the country store in El Dorado where you can find cheap gasoline and plenty of provisions. El Dorado is a wide place in the road with a sign post, a few houses and a church but oh so convenient to the gold. Rockhounds of all ages and physical abilities can access Moccasin Creek at this location. Moving up or down stream from this vicinity requires at least moderate mobility as you may have to cross fallen trees and ford the creek in some places. As a side note, I did a little panning right below the bridge where I parked (I could reach up and touch the bottom of it) and found some small pieces of gold. Obviously, the parts of the creeks closest to the parking areas see the most activity by recreational panners but some gold always remains and new gold washes in when it floods. I have found as much gold within sight of my car as I have anywhere else on the creeks. Small concentrations of gold exist all along the creek beds so you just need to be persistent in your prospecting efforts. The terrain is hilly but the change in elevation of the creek bed is only about 1 vertical foot to about 200 feet horizontally. There are miles of creek beds for prospecting and most are bounded by horse trails and hiking paths. The trails cross the creeks in many places but the water levels at these fords are usually less than ankle deep so keeping your feet dry is not a problem. The water flow of the creeks remains steady and gentle most of the year but the flow stops in late summer if rain fall has been minimal. The average depth ranges from only a few inches in most places to several feet in some of the deeper pools. Remember, if you decide to explore any distances up or downstream, you must pack out what you packed in plus any additional rocks and paydirt that you plan to take home!

kitchen colander works great), a couple of dish pans (dollar store types work great), a couple of plastic buckets, snuffer bottle, and a gold pan. A quality gold pan is probably the most important tool for the recreational panner. It allows you to recover the most gold for dollars spent both on the creek and at home. The snuffer bottle is an important tool for removing any small particles of gold from your pan once you locate them during the panning process. Because 99 percent of the gold here is very fine it is important to have at least some basic panning skills if you plan on panning in the creek. Collecting paydirt from the creek can be done by anyone and processed at home by various means. I usually screen (or classify) the stream gravels through a couple of sieves and take the fine concentrates home to do the final recovery of the gold. I still pan some of the concentrates at the creek because I like to see the gold in the pan. On occasions I have set up a small sluice in the creek and processed some of the material on site. It all takes time and I can process more material if I do the final panning/sluicing at home. There are nuggets to be found but they have eluded me so far though I usually get one or two small pickers on each trip.

Summary: For now, I want all of you think about making a trip down here and find some gold. There are many places to stay and enjoyable places to visit within an hour's drive of Uwharrie National Forest. Cabins are available for rent within the national forest, some only a mile or two from the original gold mining sites. There are many outcrops of white quartz seams crisscrossing the area. Many



of the quartz veins contain pockets of crystals. Magnetite, sphalerite, ilmenite (these can be showy little crystals in the white quartz pebbles), galena and other minerals can be found here but gold is the main attraction. Generally, my gold panning day begins by leaving home about 9 AM

and returning home no later than 3 PM. My typical trip is only for about 2 or 3 hours on the creek. In that short time, I can explore several hundred yards of the creek, pan a little here and there, fill up my buckets with paydirt, and be back home before rush hours hits. For a recent retiree and avid rockhound, life doesn't get much better than this. If you plan a trip to Uwharrie I will be glad to provide additional information and would love some company on the creek.

Update: Last week I found a piece of gold actually big enough to pick up with my fingers. It was probably five times bigger than any other piece I have found. I am going again tomorrow to work the same little hole in the creek. The spot I am panning is within 50 feet of my truck! The key is to dig the gravel down to the bedrock which is only about 12 to 18 inches in places where the rock outcrops are visible in the creek banks. With only hand tools, a half inch screen, and a gold pan, you still can't process very much material at a time. I am usually worn out in 2 or 3 hours.



The Basic Equipment and Paydirt Collecting: You can successfully prospect here with a minimal amount of tools especially since the use of motorized equipment is prohibited. My basic outfit consists of a digging tool (garden trowel or small shovel), a sieve (a

UPCOMING SHOWS

April 6 - 8, 2018: Raleigh, NC – 42nd Annual Capital Area Gem & Mineral Show. Tar Heel Gem and Mineral Club, Inc. Kerr Scott Building, NC State Fairgrounds, Raleigh, NC. The show is sponsored by the Tar Heel Gem & Mineral Club and includes 29 dealers. The Hospitality area sells grab bags with mineral specimens. Buy a rock at the Geode booth and be the first to see what is inside. The on-going Silent Auction has new items every hour. Dealers provide minerals, fossils, finished jewelry, gemstones, findings and beads for sale.. Hours: Fri 3-8; Sat 10-6; Sun 10-5. Admission: Free and Free Parking. Contact: Cyndy Hummel; 919-779-6220; mchummel@mindspring.com; www.tarheelclub.org;

July 30 - August 6: Spruce Pine NC - 33rd Annual Grassy Creek Mineral and Gem Show. Sponsored by the Parkway Fire and Rescue to raise funds for new equipment. 60 worldwide vendors with gems, minerals, fossils, jewelry, lapidary equipment and much more. Address is 136 Majestic View, Spruce Pine NC 28777. This is at the new fire station on top of the hill above the old fire station and show field. Dates are July 30th to August 6th, 2017. Hours are from 10 to 6 with some vendors open earlier or later. Admission and parking are free. Contact Donna Collis at 828-765-5519 or collisdonna@yahoo.com. Website is <http://www.grassycreekgemshow.org>. Applications are available on the website.

24th Anniversary
AURORA FOSSIL FESTIVAL
MAY 26 - 28, 2017

Sponsored by the Aurora-Richland Township Chamber of Commerce
 Main Street, Aurora, North Carolina

FRIDAY 6:00 pm - Opening Ceremony and Fossil Pageant
 7:30 pm - 8:30 pm - Live Music: Steel Shot
 8:30 pm - 10:30 pm - Live Music: Bryan Mayer

SATURDAY
 8:00 am - 5K Fossil Run
 9:00 am - Veteran's Breakfast
 9:00 am - Festival Activities Open
 10:00 am - Paleontology Lecture: Museum Learning Center
 11:00 am - Parade on Main Street
 Noon - 1:00 pm - Main Stage: Ronald McDonald
 12:15 pm - Paleontology Lecture: Museum Learning Center
 1:00 pm - 2:00 pm - Motorcycle Drill Team / Live Music: Skyline (K-OS)
 1:00 pm - 5:00 pm - Activities in the Children's Tent
 1:45 pm - Paleontology Lecture: Museum Learning Center
 2:30 pm - 4:30 pm - Live Music: Back Door Hippies
 3:00 pm - Live Fossil Auction: Museum Learning Center
 5:00 pm - 6:30 pm - Live Music: Opry Country Band
 7:00 pm - 10:30 pm - Live Music: Billy Holton & the Soul Shakers

ALL DAY ACTIVITIES: Craft, Food, and Fossil Vendors, Games, Fossil Hunting, Fossil/Mineral Displays and Fossil Identification, Civil War Encampment, Lawn Mower Pull, Car Cruise-In, PotashCorp-Aurora Mine Tours!

SUNDAY 10:00 am - 2:00 pm - Church Service

252-322-4405
www.aurorafossilfestival.net
 Like us on Facebook!
 "Aurora Fossil Festival"

Vugsites The following are some links to Web-Sites that may interest some of our members:

<http://www.tarheelclub.org> / <https://www.facebook.com/tarheelgemandmineralclub/> These are the official sites for the Tar Heel Gem & Mineral Club. I would strongly urge all members to check them out on a regular basis.

<http://www.amfed.org> / <http://www.amfed.org/sfms> These are the official sites for the organizing body that the Tar Heel Gem & Mineral Club is founded under. I would strongly urge all members to check them out on a regular basis.

http://www.amfed.org/sfms/lodestar_newsletter.html The SFMS Lodestar Newsletter

<http://www.carolinageologicalsociety.org/CGS/Home.html> This site provides numerous downloadable field-trip guide books, maps, and charts of the Carolinas. It will prove to keep any avid rock hound busy for years. Great Site!

http://www.ncminerals.com/ncmineralswebsite_files/page0011.htm And while we are on the subject, try this link. Its titled: Links of Interest to Rock hounds in NC. It will take you to a list of links for North Carolina gems and minerals.

<http://www.rocksforkids.com/> Just like the name says, a nice place to steer the younger members.

Information & photographs of over 6300 specimens from the Glenn & Martha Vargas Gem & Mineral Collection.

<http://www.rockhoundlounge.com> Scott Laborde, a club member maintains his own web site that might be of interest to people collecting in and around Wake County.

http://www.msnbc.msn.com/id/29726500/ns/technology_and_science-science This site highlights a half dozen of the most recent significant fossil finds.

<http://appmodo.com/13971/mole-quest-for-the-terracore-gem-app-review-for-the-iphone-and-ipod-touch/> If you have an iphone or an ipod touch, this rock-hounding may be the game for you.

http://diamonddanpublications.net/index_files/page0009.html Diamond Dan's Mini Miner's Monthly

I would like to encourage all members of the THG&MC that maintain their own presence on the internet to send me a link to their site to be published in future Vugsites so that other club members may learn and enjoy the craft, the art, the interests that many of us have in common.

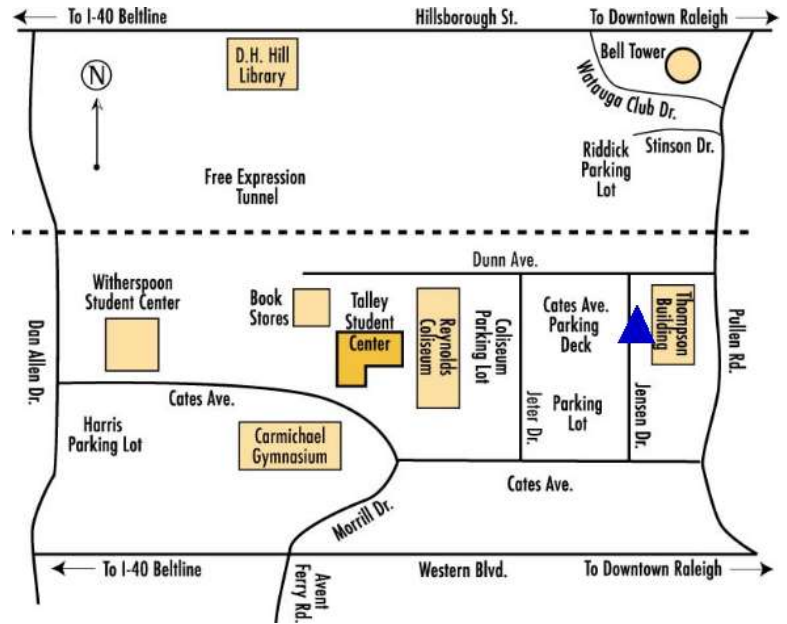
Park in the Cates Ave. Parking Deck off Jensen Dr. Enter Thompson Building directly across from the parking lot.

**Our Next Meeting is
May 16, 2017 @ 7:30PM
Thompson Building / NCSU Campus.**

About Our Organization...

The Tar Heel Gem and Mineral Club, Inc. was formed in 1974 as a nonprofit educational organization for people who enjoy the lapidary arts, earth sciences, and related subjects. The main objectives of the club are to investigate, preserve, and share knowledge of rocks, minerals, and precious stones, and to promote interest in mineralogy, paleontology, earth sciences, and lapidary techniques, among club members and among the general public. The club pursues these goals through publications, meetings, lectures, field trips, exhibits, demonstrations, and other activities.

Come and be a part of the Fun!



TAR HEEL GEM & MINERAL CLUB
10609 Chelsea Drive
Raleigh, NC 27603

